

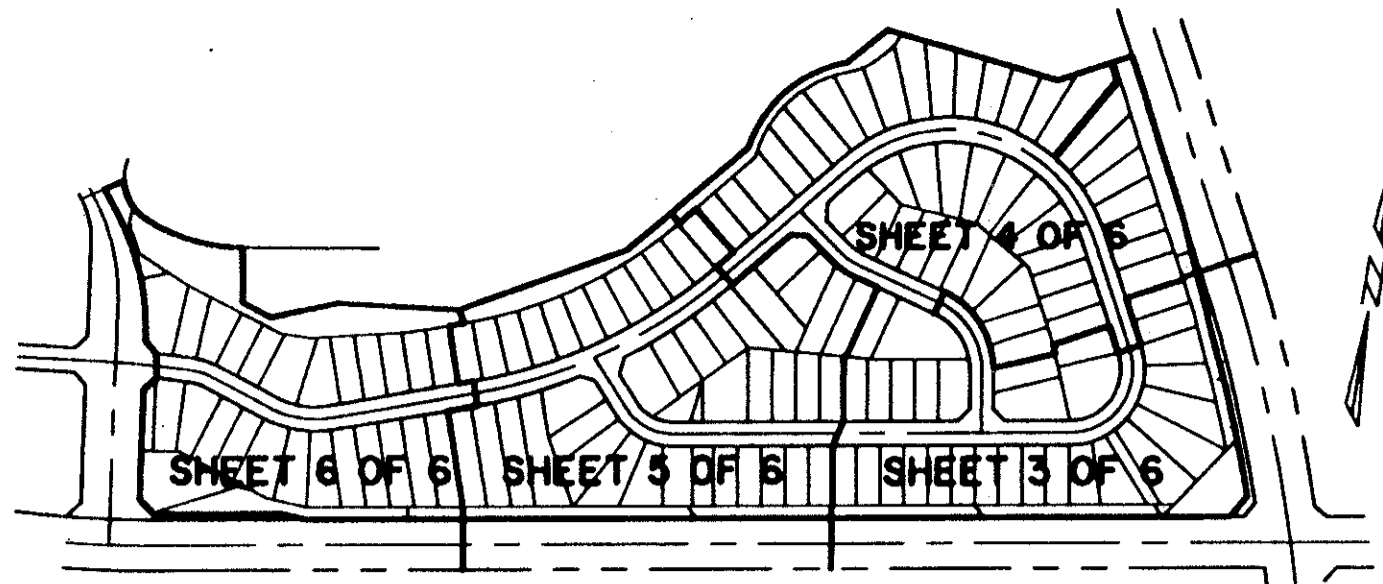
ABERDEEN-PLAT NO. 26 REPLAT

A PORTION OF A PLANNED UNIT DEVELOPMENT
 LYING IN SECTIONS 15 AND 16, TOWNSHIP 45 SOUTH, RANGE 42 EAST,
 BEING A REPLAT OF A PORTION OF ABERDEEN-PLAT NO. 26 AS RECORDED IN
 PLAT BOOK 79, PAGES 2 THRU 7, PUBLIC RECORDS OF PALM BEACH COUNTY, FLORIDA.
 SHEET 3 OF 6
 OCTOBER, 1997

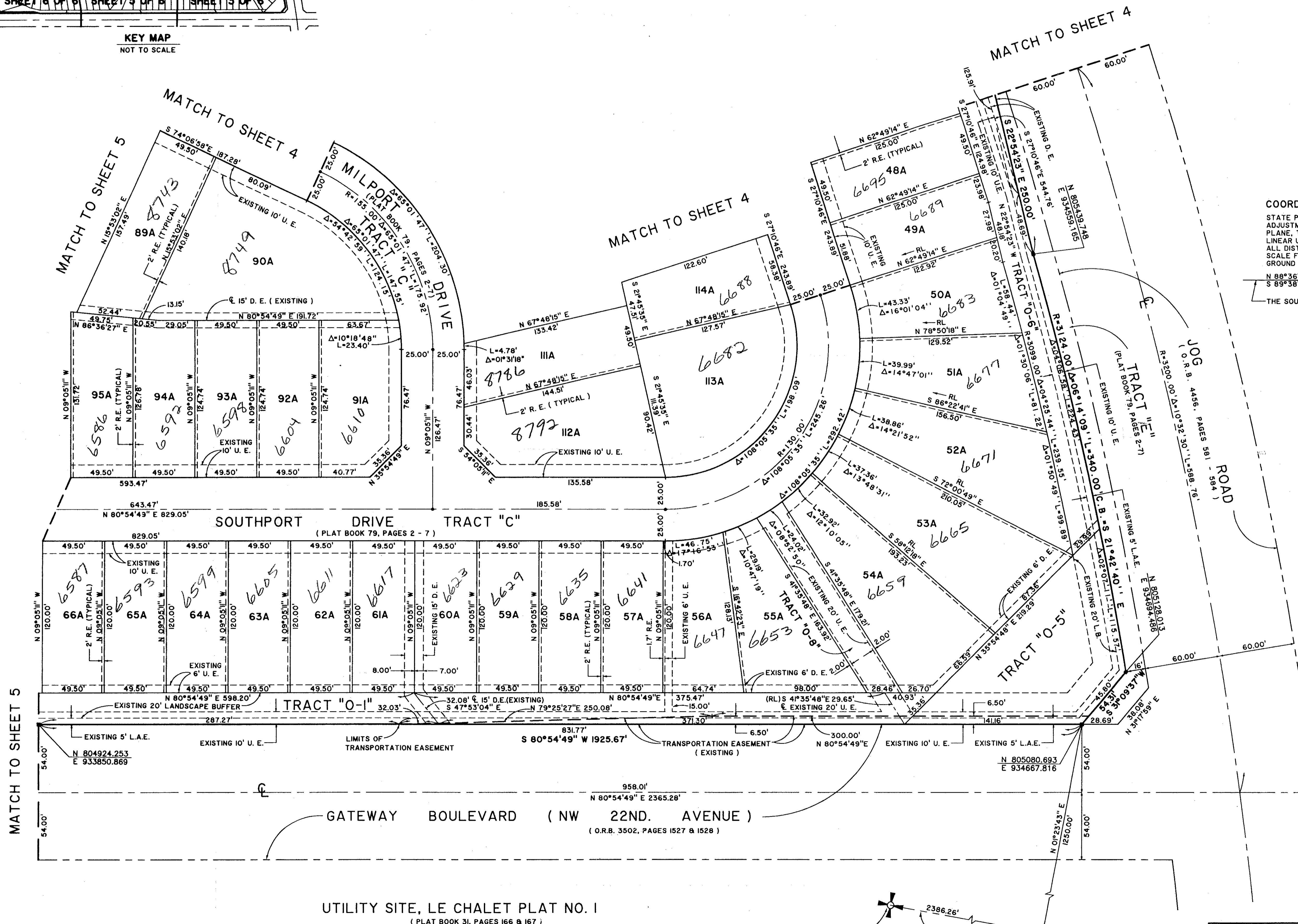
0270-032

96

STATE OF FLORIDA
 COUNTY OF PALM BEACH
 THIS PLAT WAS FILED FOR RECORD AT _____
 M. THRU _____ DAY OF _____ 19____
 AND DULY RECORDED IN PLAT BOOK NO. _____
 ON PAGE _____
 DOROTHY H. WILKEN, CLERK OF THE CIRCUIT COURT
 BY _____ D.C.

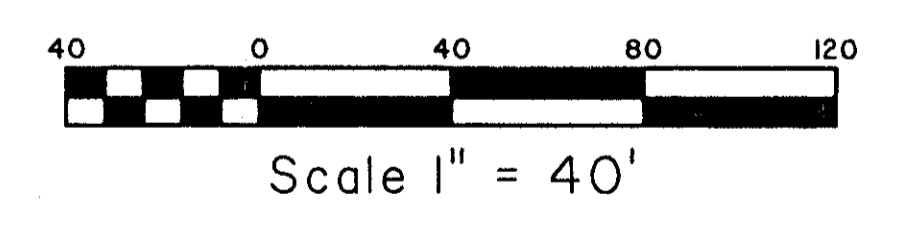


KEY MAP
 NOT TO SCALE



COORDINATE NOTE:
 STATE PLANE COORDINATES SHOWN ARE GRID DATUM, NAD 83 1990
 ADJUSTMENT, FLORIDA EAST ZONE, COORDINATE SYSTEM 1983 STATE
 PLANE, TRANSVERSE MERCATOR PROJECTION
 LINEAR UNIT = US SURVEY FEET
 ALL DISTANCES ARE GROUND
 SCALE FACTOR = 1.0000293
 GROUND DISTANCE X SCALE FACTOR = GRID DISTANCE
 N 89°36'17" W (PLAT BEARING) -0°45'15" COUNTERCLOCKWISE ROTATION
 S 89°38'26" E (GRID BEARING) PLAT TO GRID
 THE SOUTH LINE OF SECTION 15, TOWNSHIP 45 SOUTH, RANGE 42 EAST.

PET. 80-153E
 #0001
 5/2/2/I



Pool

82/196

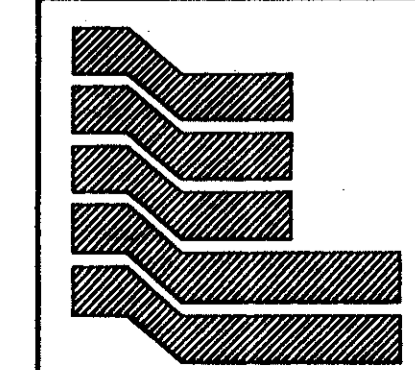
SUBMISSION # Aberdeen-Plat 26
 BOOK 82
 PAGE 90
 FLOOD ZONE B
 ZONING RS
 QUAD # 49-34
 SE 80-153
 ZIP CODE 33436
 PUD NAME Aberdeen
 TR 2 442

UTILITY SITE, LE CHALET PLAT NO. 1
 (PLAT BOOK 31, PAGES 166 & 167)

SW CORNER OF SECTION 15
 TOWNSHIP 45 S., RANGE 42 E.
 FOUND 3/4" IRON PIPE

S 1/4 CORNER OF SECTION 15
 TOWNSHIP 45 S., RANGE 42 E.
 FOUND P.B.C. BRASS DISC

0270-032



Landmark Surveying & Mapping Inc.
 1850 Forest Hill Boulevard
 Ph. (561) 433-5405 Suite 100 W.P.B. Florida

ABERDEEN-PLAT NO. 26 REPLAT